

The Potential of Regional Immigration Policies

Presented by:

Art DeFehr

August 15 and 16, 2012

Palmer Conference

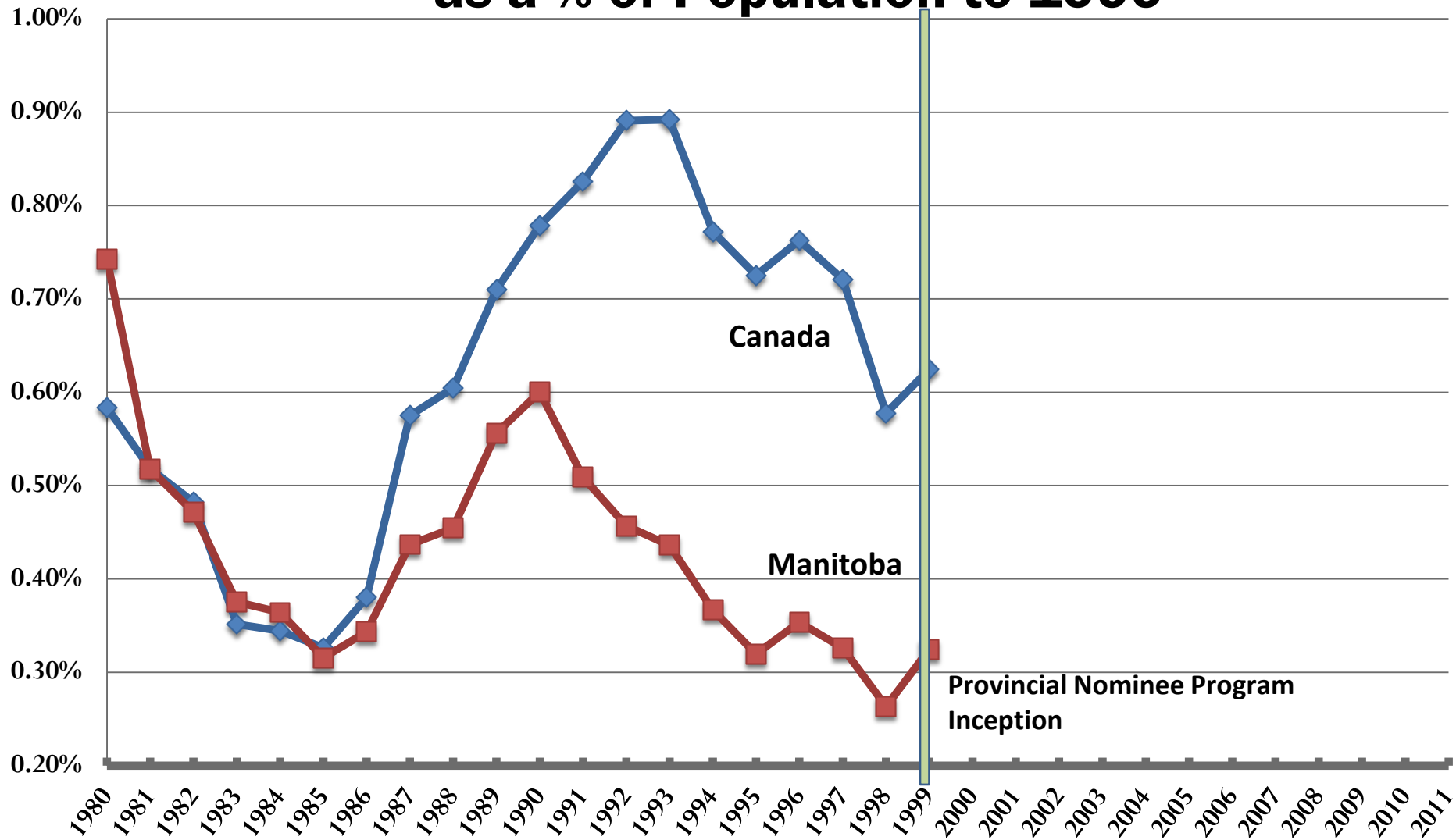
Charlottetown, PEI



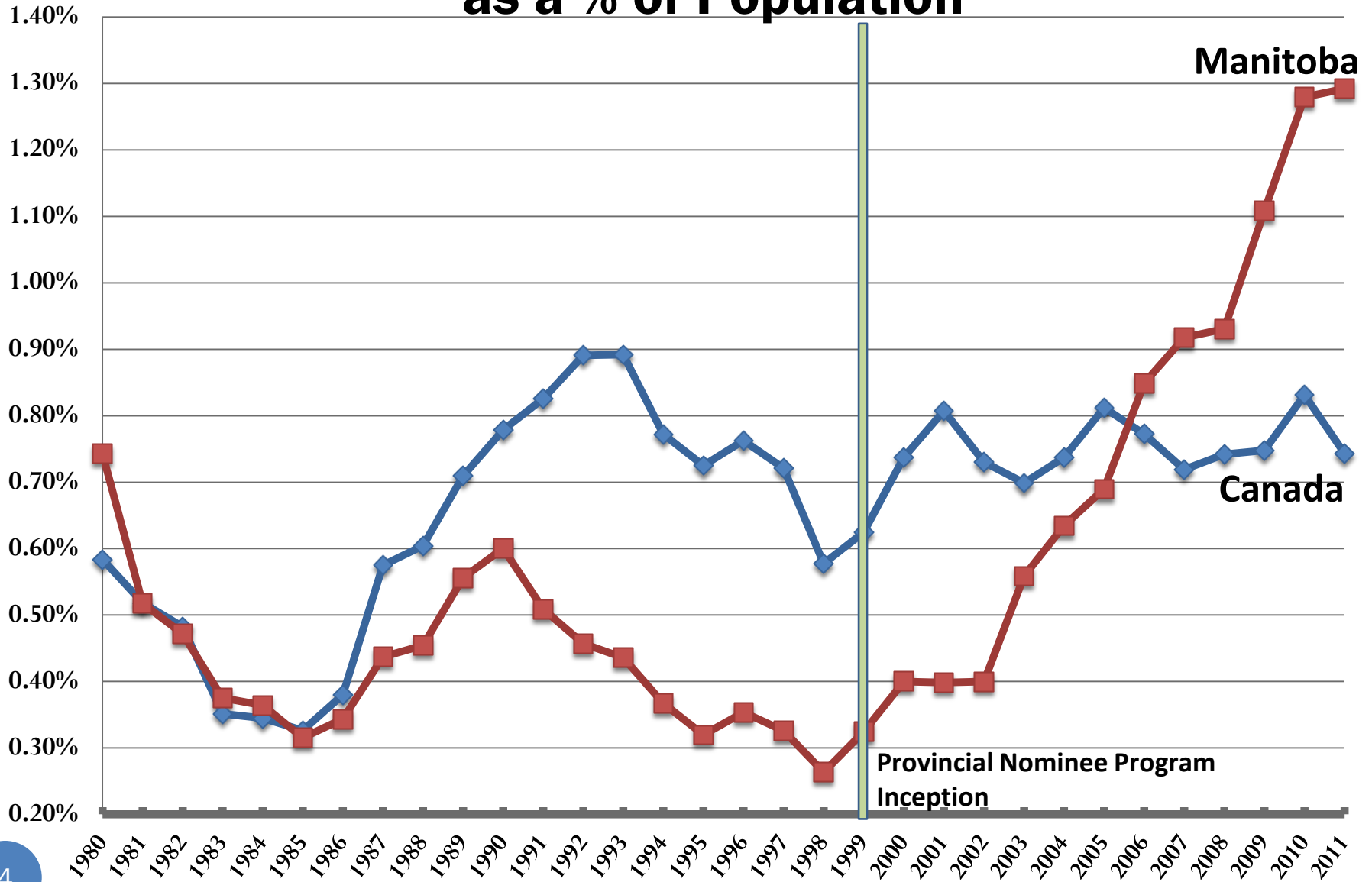
The Manitoba Immigration Story – Outcomes and Lessons

- Population Policy – response to economic and demographic stagnation
- Federal System did not work for Manitoba
- Focus on “likely to succeed” rather than only jobs
- Build community rather than “plug employment holes”
- Private sector played important role

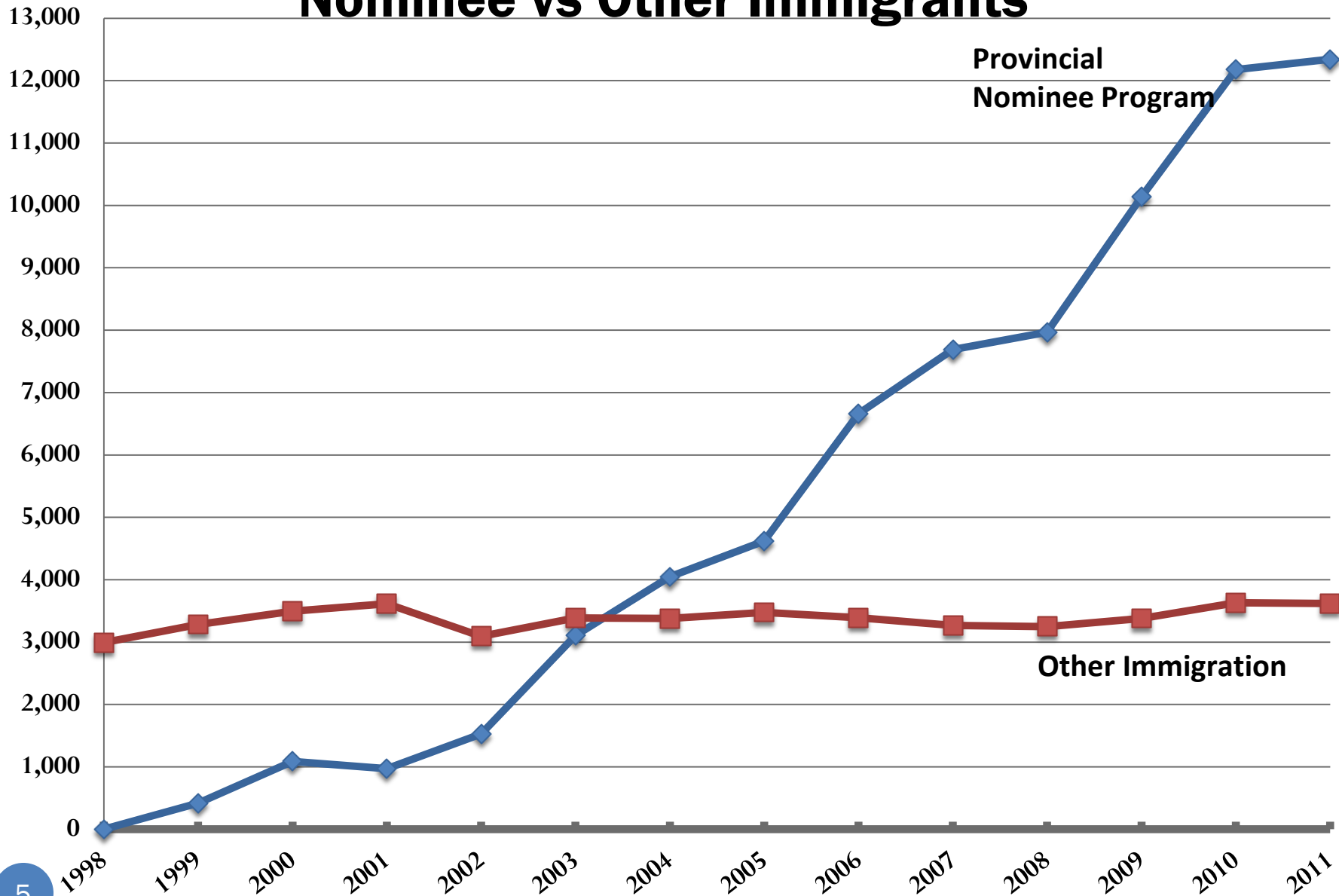
Canada/Manitoba Immigration as a % of Population to 1999



Canada/Manitoba Immigration as a % of Population



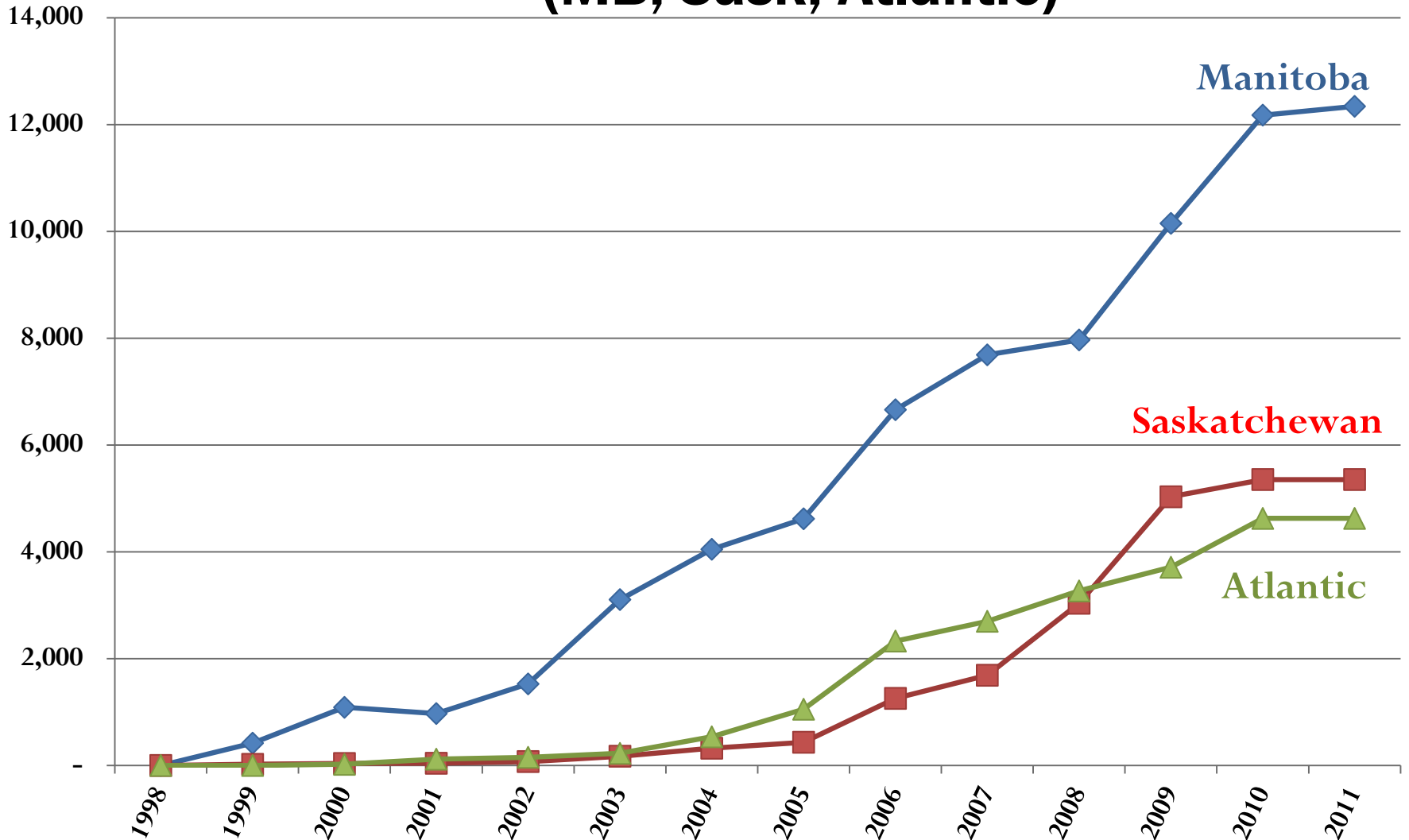
Manitoba Nominee vs Other Immigrants



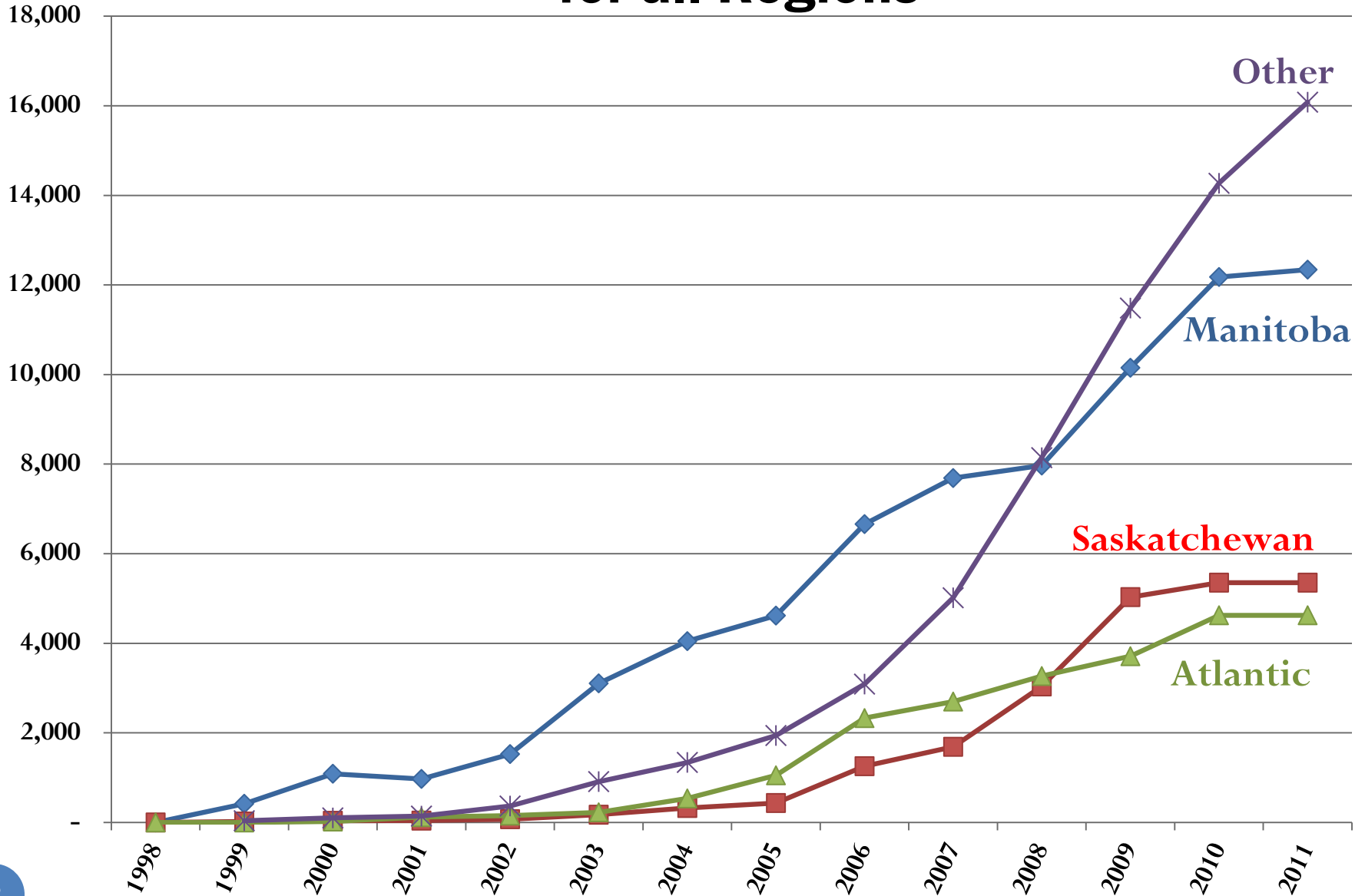
Measure of Success in Manitoba

- Positive employment experience
- 85% plus retention
- Home ownership equal or higher than Canadian average
- Success of smaller communities to attract and benefit
- Visible growth and excitement in Winnipeg
- Support from full political spectrum
- Broad community and business support

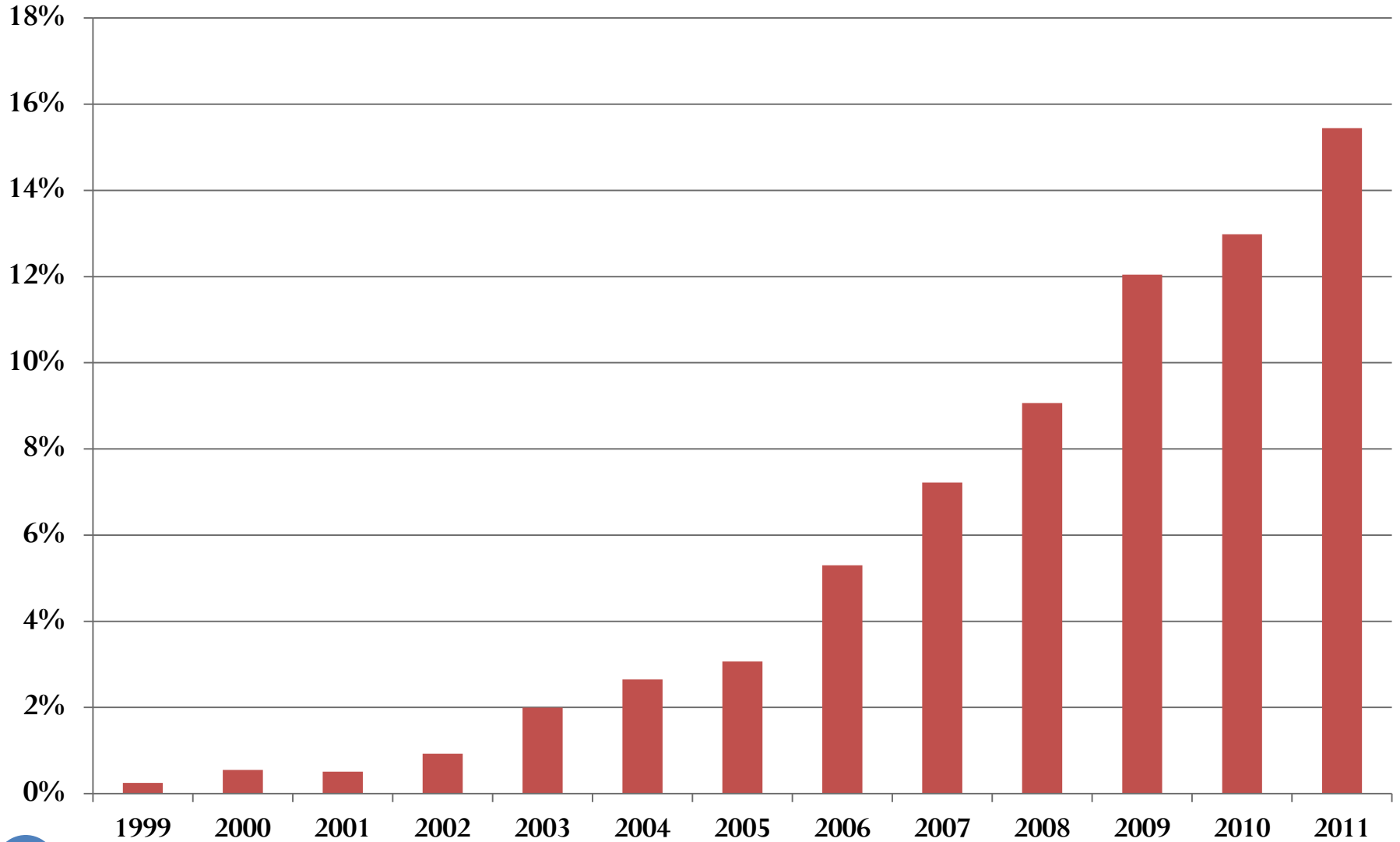
PNP Programs Across Canada (MB, Sask, Atlantic)



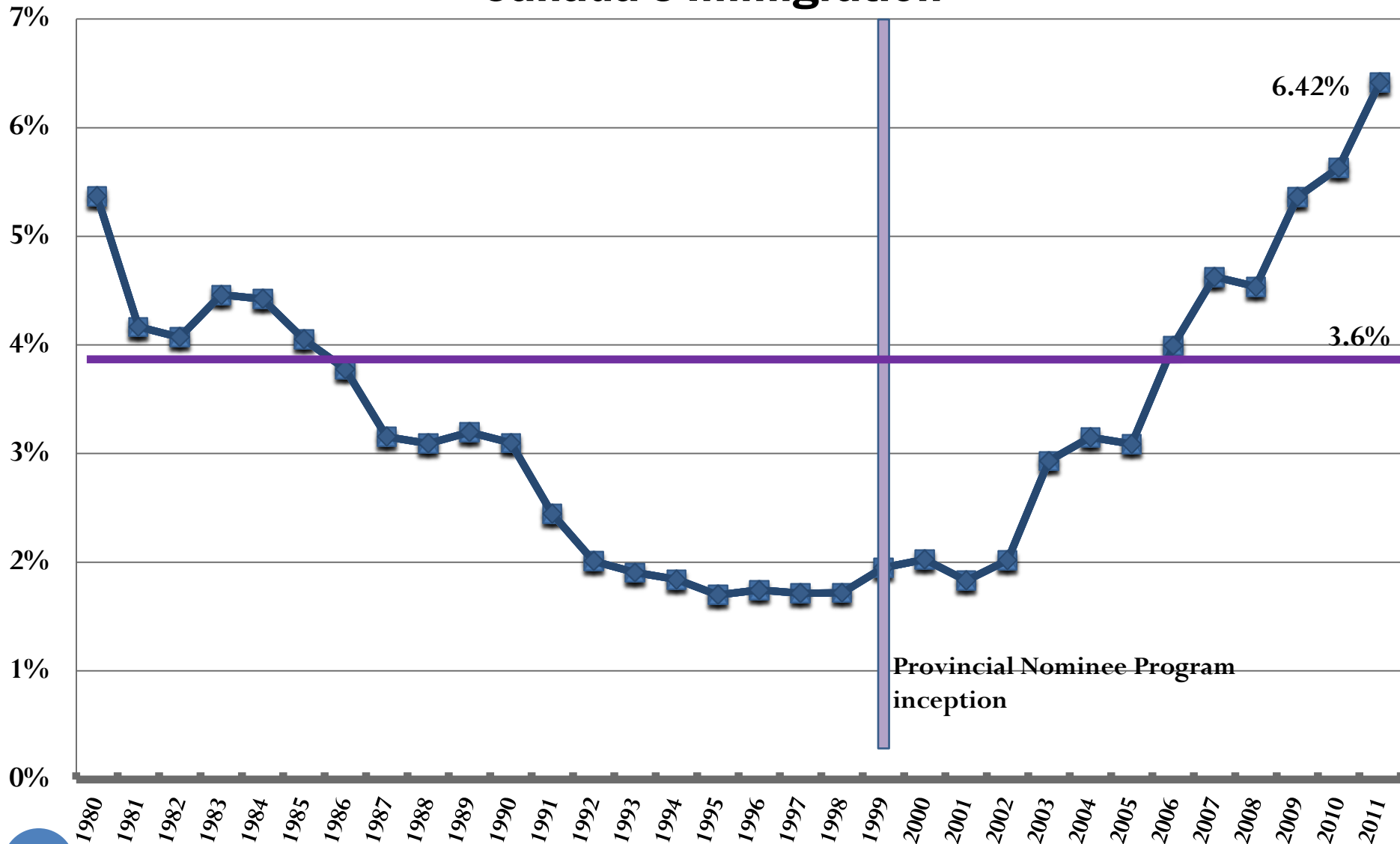
PNP Programs Across Canada for all Regions



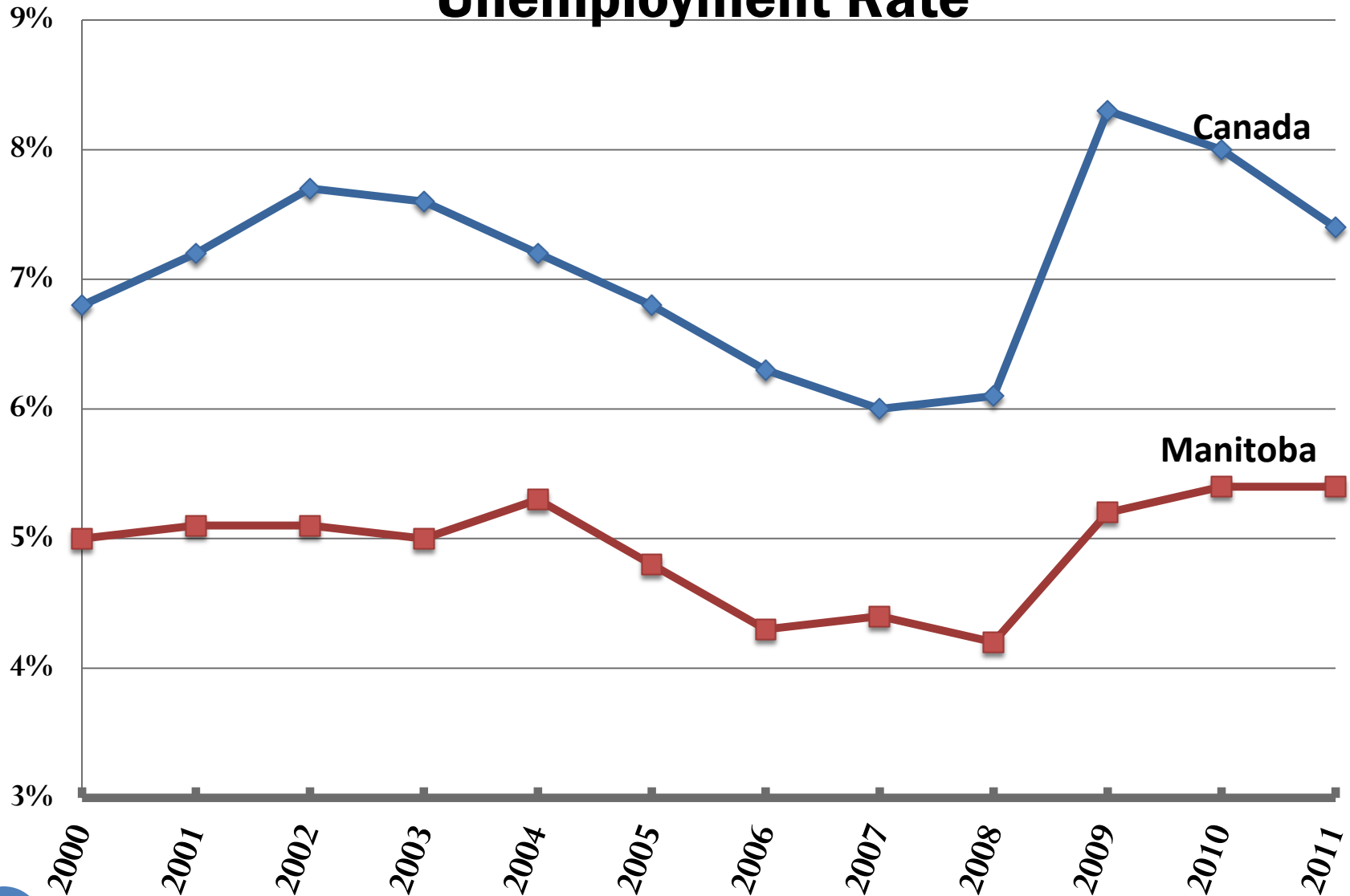
Provincial Nominee Program as total share of Canadian Immigration - 1999 - 2011



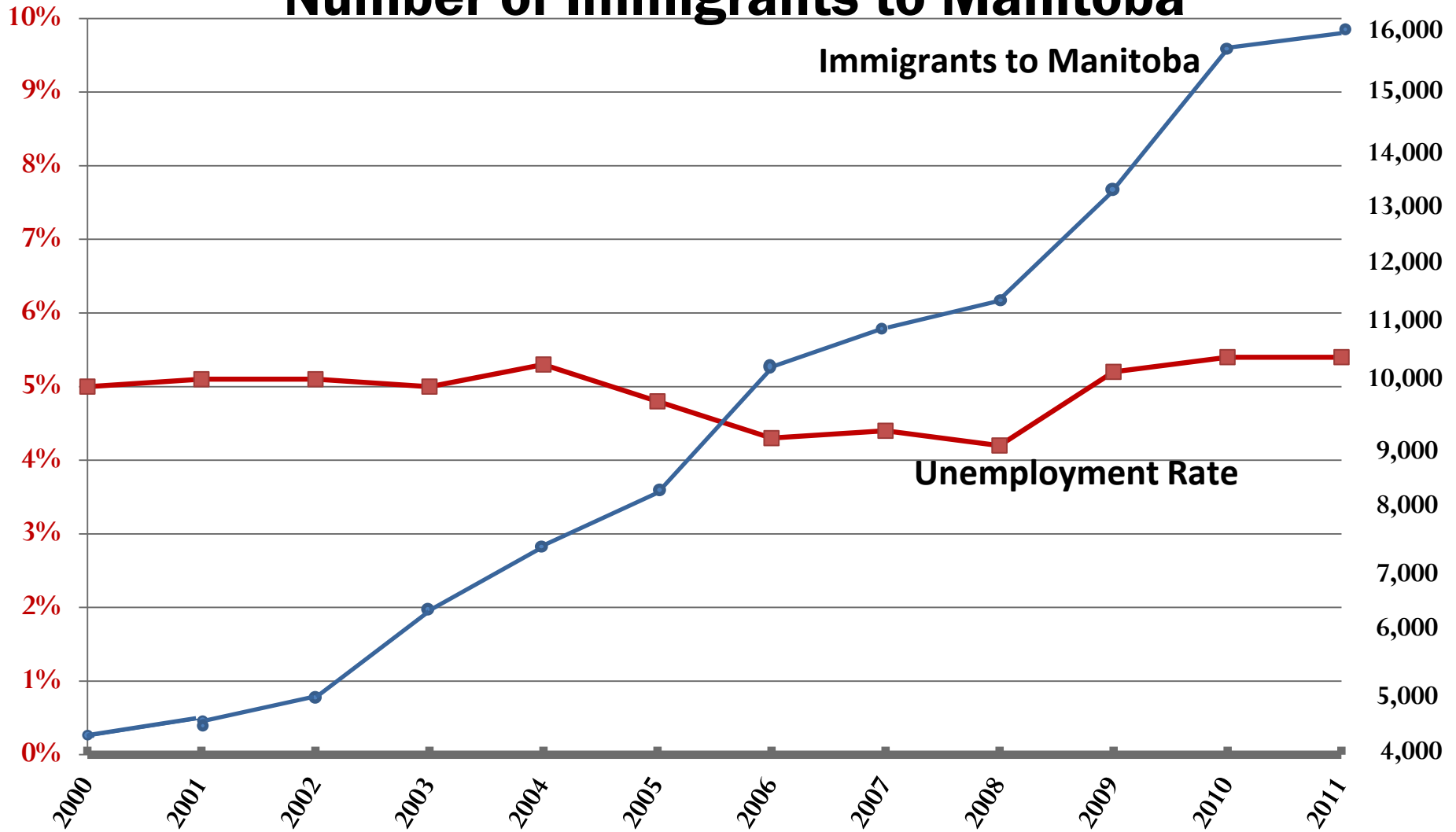
Manitoba Immigration as a % of Canada's Immigration



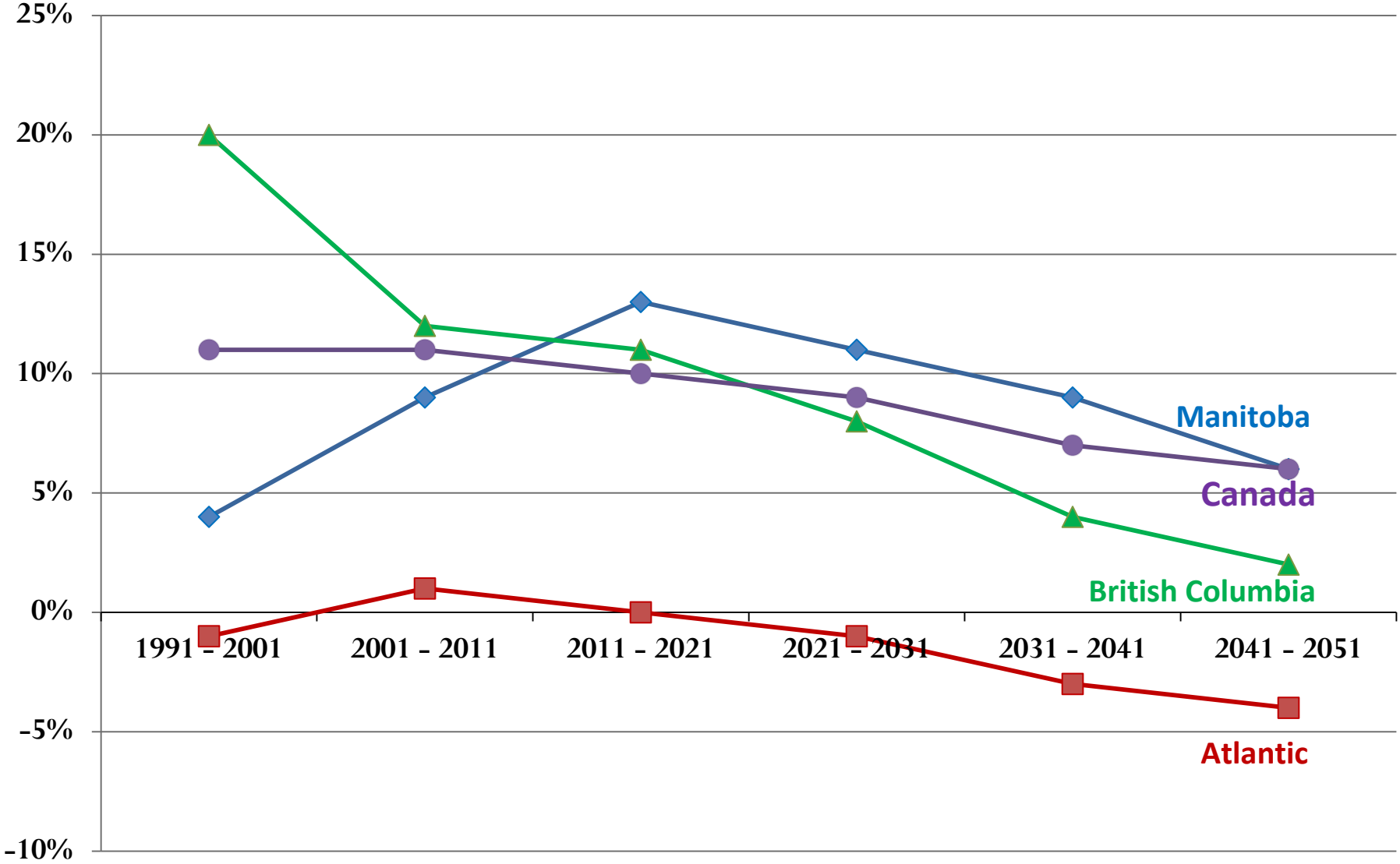
Manitoba vs. Canadian Unemployment Rate



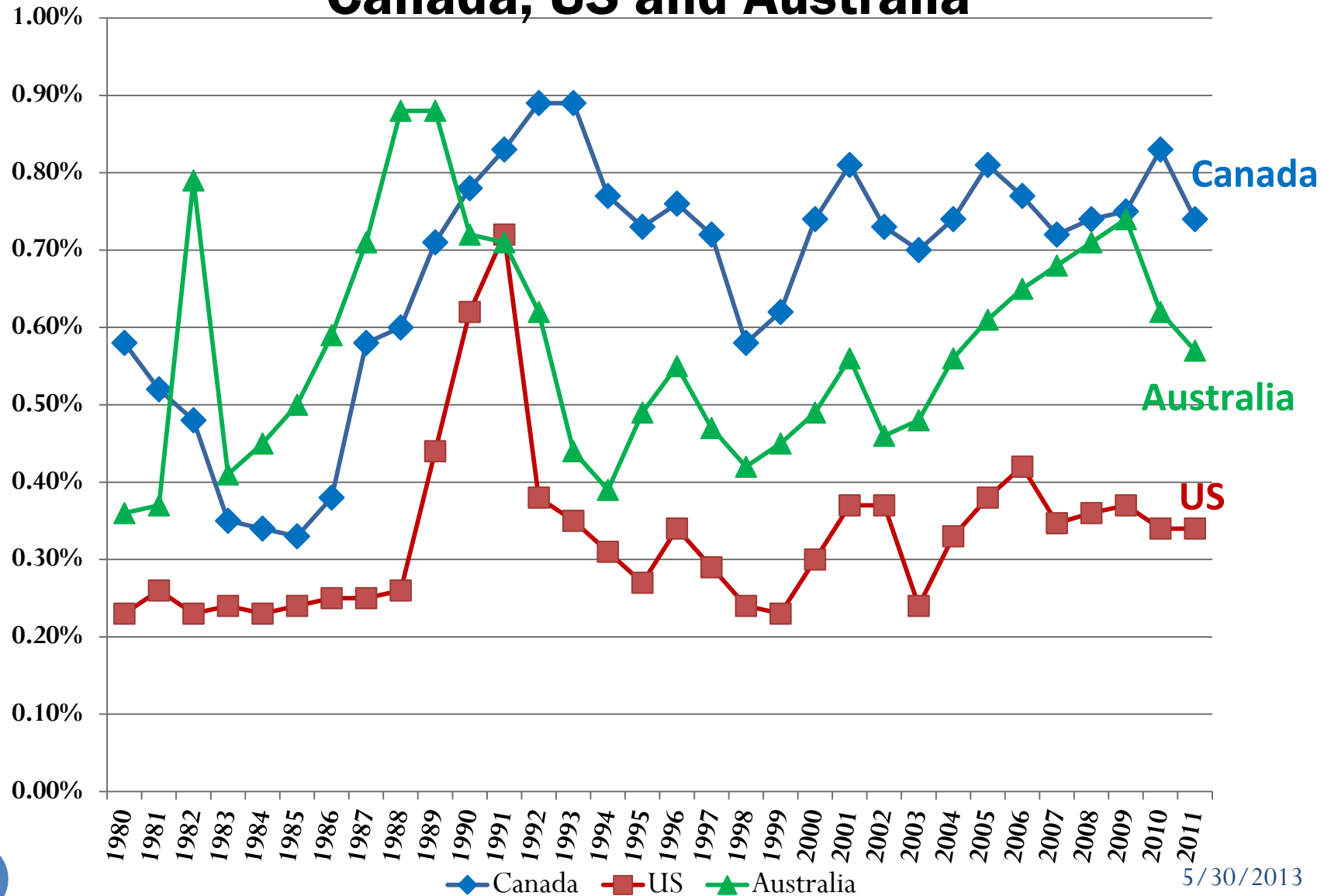
Provincial Unemployment Rate vs. Number of Immigrants to Manitoba



POPULATION GROWTH HISTORY AND PREDICTIONS



International Comparison Canada, US and Australia



Policy Questions

1. Should there be a Cap on immigration numbers?
 - a) National Cap
 - b) PNP Cap
 - c) Other Categories
2. PNP programs – All provinces or limit PNP to where federal programs have historically not worked well?
3. Location restrictions for some immigrants – Is there a place for a category that accepts some time-limited restrictions on re-location?

Would location restrictions work for Atlantic?

Policy Questions (continued)

4. Temporary Foreign Worker Program – Do we adequately understand the sociology and long term impact of this flow of people?

5. Language Requirement – Does one size really fit all?

Will level 4 English damage effectiveness of PNP?

6. Family Re-unification – Program rules and design must reflect the actual capacity to accept and absorb.

Policy Questions (continued)

7. Diversity of immigration flow is important – how much do we do by design rather than by accident?
8. Building Community versus filling slots – the right balance is critical. If wrong the consensus in favor of immigration may decline.

Immigration works if.....

- ✓ Intelligently Designed
- ✓ Implemented with competence
- ✓ Supported by total community

DON'T MESS WITH WHAT WORKS

